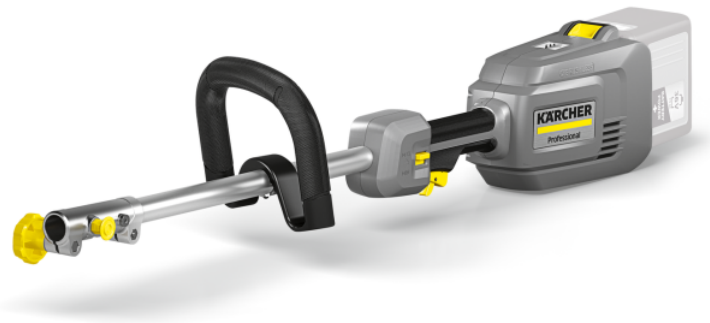


MT 36 BP

Our MT 36 Bp battery powered multi-tool is a drive unit that can have different ends mounted to it, from pole hedge trimmers to pole pruners. For a variety of tasks with just one machine.



Order no. 1.042-511.0

- Brushless motor
- Quick coupling for easy tool changes
- Variable rotation speed for use in any situation

Technical data		
EAN code		4054278635965
Battery platform		36 V battery platform
Rotational speed	rpm	7800 / 6800
Voltage	V	36
Weight without accessories	kg	2.6
Weight incl. packaging	kg	3.6
Dimensions (L × W × H)	mm	951 × 197 × 188

Equipment	
Round rubber grip	■
Shoulder belt	■
Quick coupling	■

■ Included in delivery.



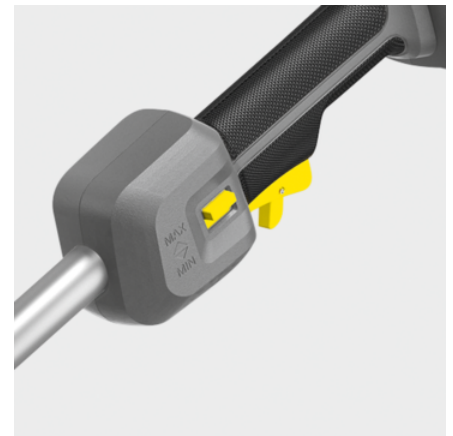
Convenient quick coupling

- Change attachments easily, quickly and without any tools.
- Compact and easy to transport and store.



Ergonomic, round grip

- Enables you to work in comfort.
- Can be individually adjusted for each user.



Variable speed

- Can be adapted to the particular usage.
- Extended runtime.

EQUIPMENT FOR MT 36 BP 1.042-511.0



		Order no.	Description	
MACHINE ACCESSORIES				
Shoulder belt universal	1	2.042-016.0		■
MT EXT 100	2	2.042-031.0		□
MULTI-TOOL				
MT HT 550/36	3	1.042-513.0	Interchangeable attachment for our MT 36 Bp battery powered multi tool: Convenient MT HT 550/36 pole hedge trimmer for precise results for demanding jobs on tall hedges or close to the ground.	□
MT CS 250/36	4	1.042-512.0	Interchangeable attachment for our MT 36 Bp battery powered multi tool: The MT CS 250/36 pole-mounted pruners with a compact design for safe, precise tree care, including hard-to-reach places from the ground.	□
BATTERIES				
Accumulator special accessories 36V 5,0	5	2.445-031.0		□
Battery Power+ 36/75	6	2.445-043.0		□
Battery Power+ 36/60	7	2.042-022.0		□
FACADE AND SOLAR PANEL CLEANING				
Attachment kits and adapters				
Carrier system	8	6.373-071.0	Comfortable and universal carrying frame for reducing the required holding force when working with telescopic lances, garden tools and high-pressure lances.	□

■ Included in delivery. □ Available accessories.