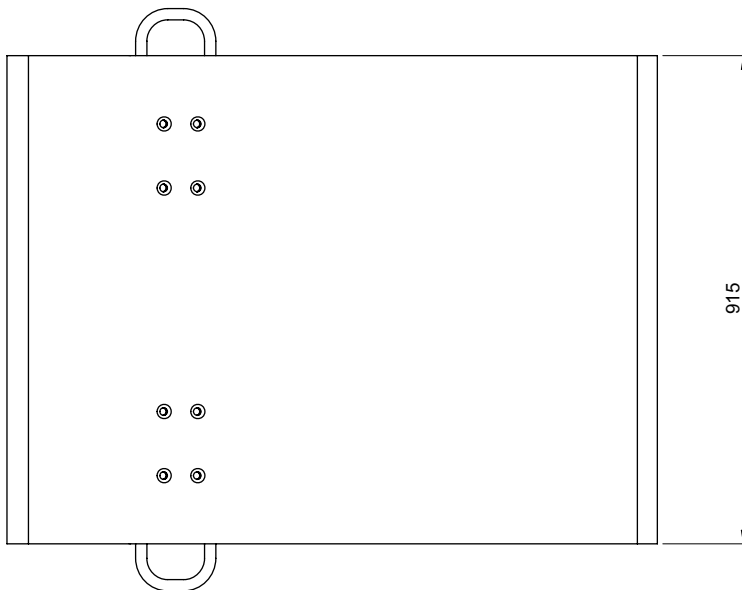
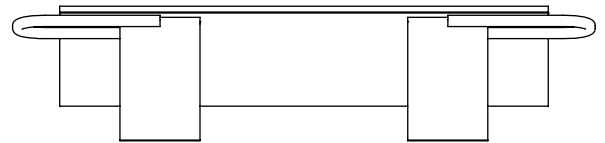
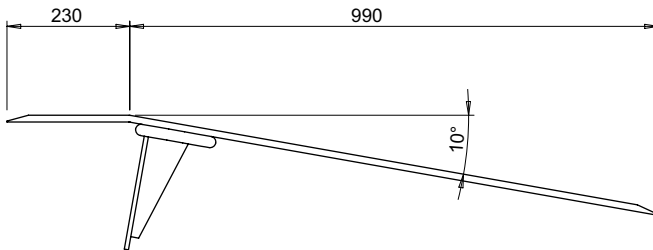
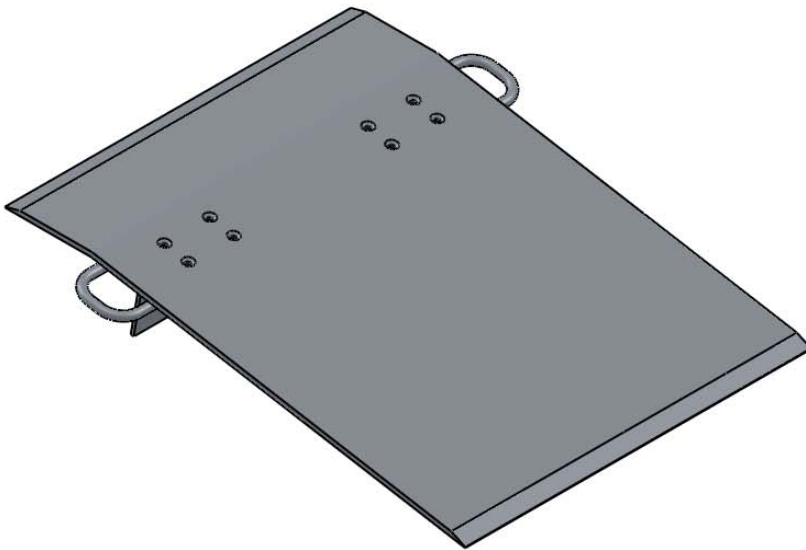


# PART No: H3648

Dockplates provide an effective and low cost way of loading and unloading vehicles from a loading dock using trucks. They require no disruption to the existing dock and are easier to install than more expensive alternatives.

MATERIAL	High Tensile Aluminium with built-in anti-slip finish
WEIGHT	44 Kg
ESTIMATED LEADTIME	5-10 Working Days
HEIGHT DIFFERENTIAL	MAX POSS. +/- 178mm MAX RECC. +/- 125mm
CAPACITY	1360 Kg



**PLEASE NOTE:**

Model shown here with Standard Locking Legs and D-Loop Handles. Please see below for information on Optional Extras.

FTH-1	Fork Truck Lifting Handles
SCC-2	Side Curbs with Castor for easy movement
FSL-1	Fixed Span Locking Legs