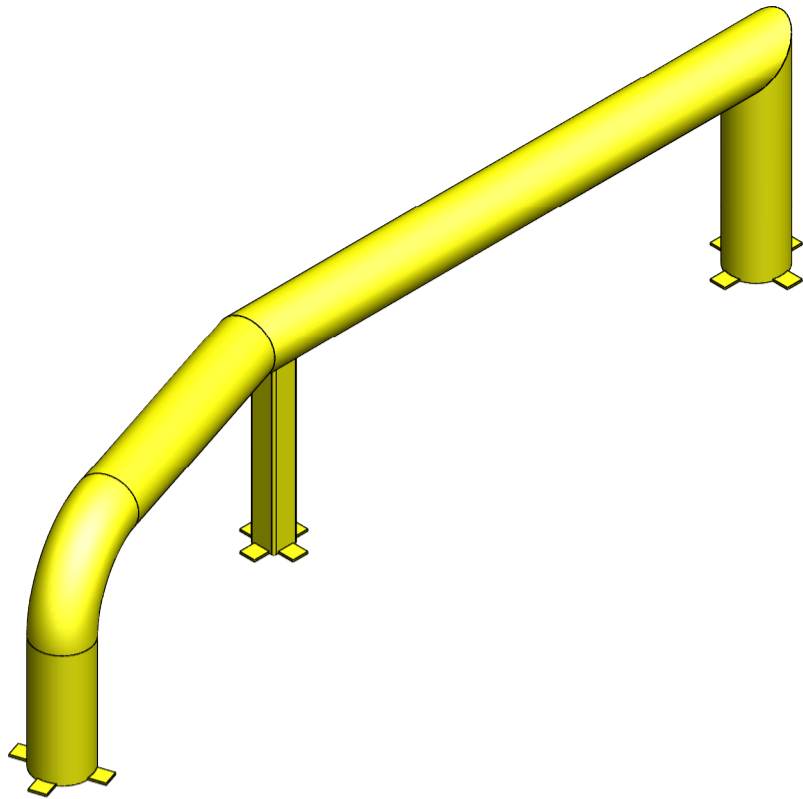
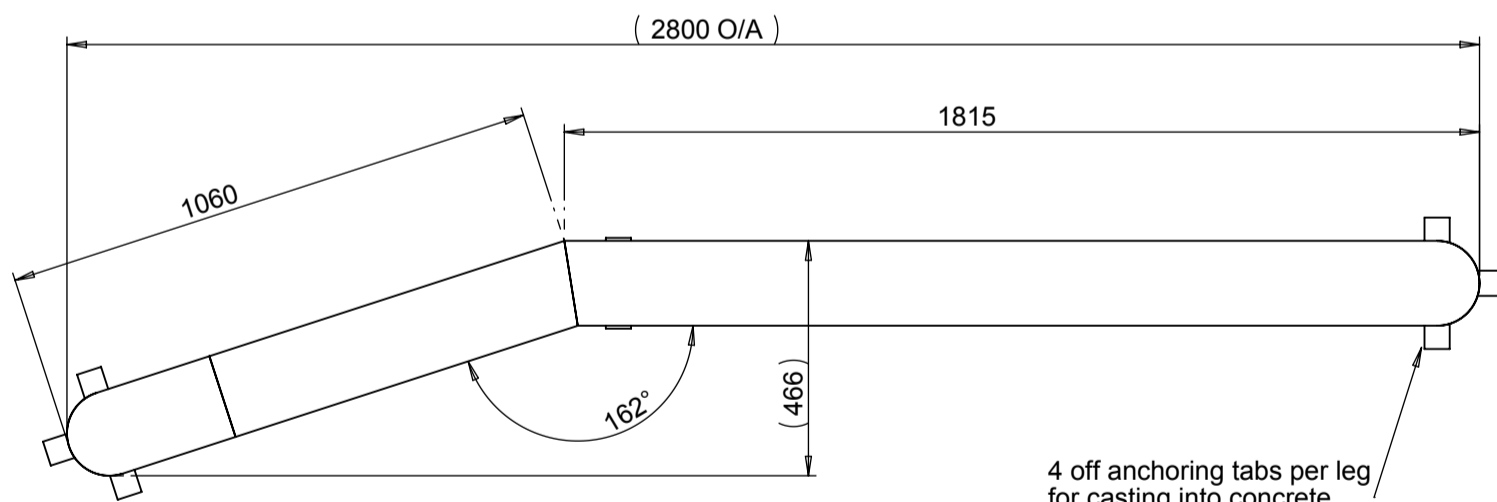
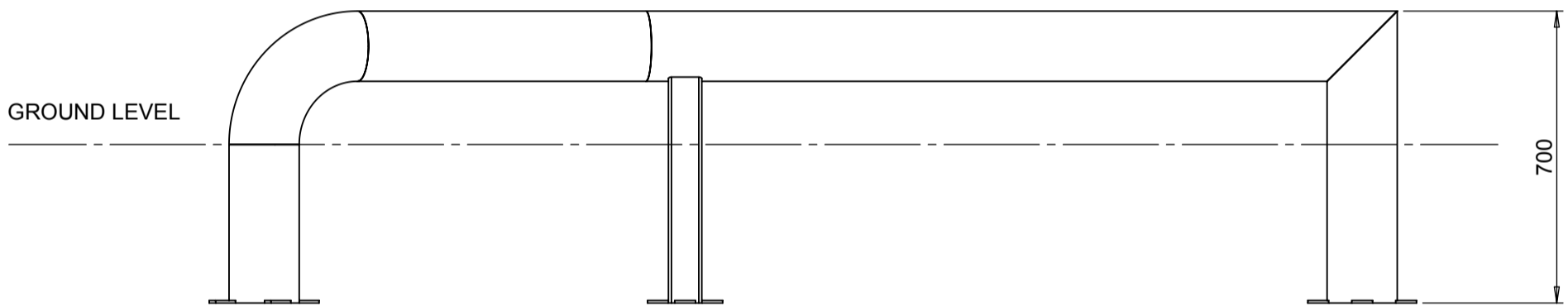


# PART No: TWAC-28-B-F

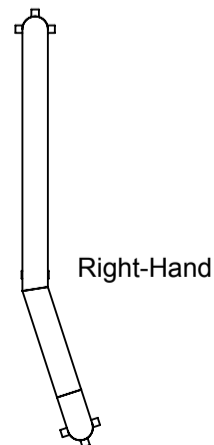
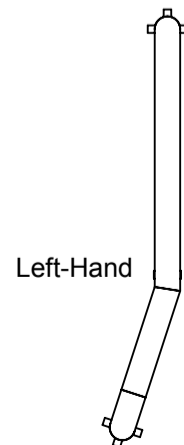


Flared alignment curbs are ideal for guiding lorries into the correct position in front of the loading dock, thus minimising damage to dock equipment, and ensuring correct alignment with any levelling equipment every time.

|                    |   |
|--------------------|---|
| MATERIAL           | Steel                                     |
| WEIGHT             | 75.3 Kg Each                              |
| ESTIMATED LEADTIME | 2 - 3 Weeks                               |
| FIXING TYPE        | Below ground.                             |
| QUANTITY OF SALE   | Each<br>(Specify Left hand or Right hand) |



4 off anchoring tabs per leg for casting into concrete.



NOTE - For fixing into sound concrete only.

All dimensions shown are in millimetres and are intended for reference purposes only; exact product measurements may vary due to applied tolerances and methods of manufacture