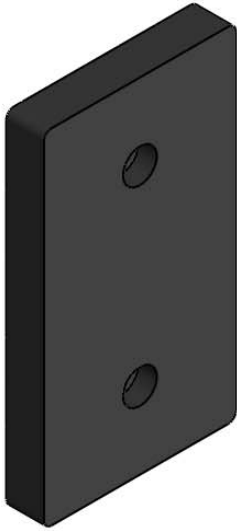
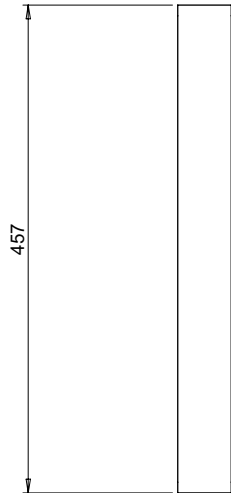
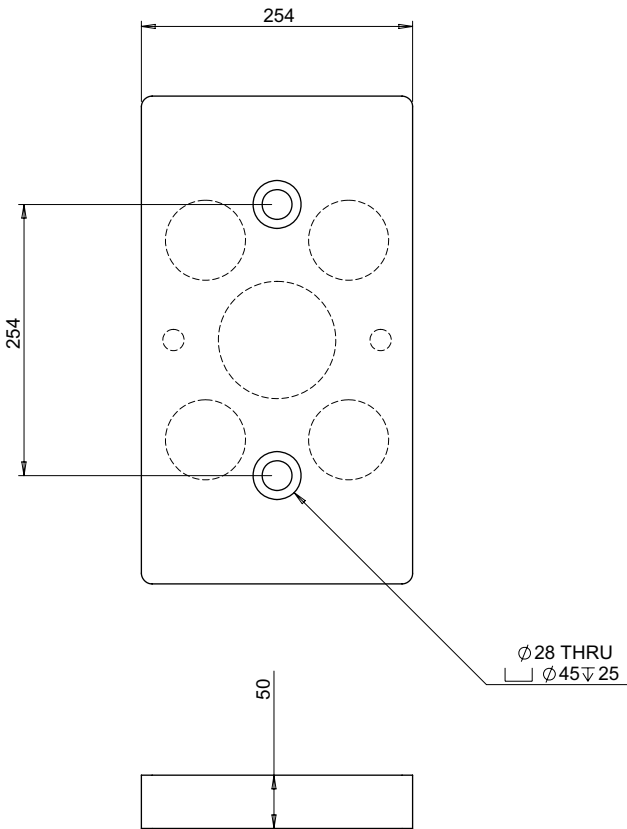


PART No: TWB-1018-2



Serious consideration should be given to fitting Dock Bumpers at loading bays. They reduce damage to loading docks, equipment and buildings caused by vehicle impact, thus reducing maintenance bills.

| | |
|--------------------|----------|
| MATERIAL | Rubber |
| WEIGHT | 15 Kg |
| ESTIMATED LEADTIME | EX STOCK |
| NO. HOLES | 2 |



All dimensions shown are in millimetres and are intended for reference purposes only; exact product measurements may vary due to applied tolerances and methods of manufacture