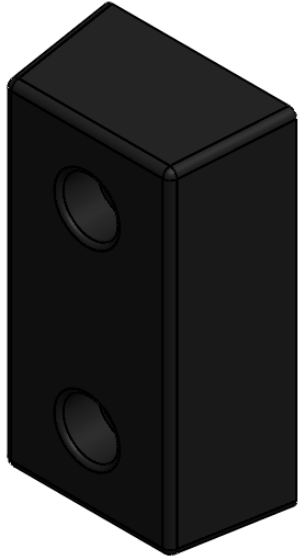


PART No: TWB-1018-6



Serious consideration should always be given to fitting Dock Bumpers at loading bays. They reduce damage to loading docks, equipment and buildings caused by vehicle impact and consequently significantly reduce maintenance bills.

MATERIAL	Rubber
WEIGHT	18.5 Kg
ESTIMATED LEADTIME	EX STOCK
NO. HOLES	2 (M16 fixings recommended)

